



## EEF – Equitable Education Fund (Thailand)

388 S.P. Building 13Th Floor Phaholyothin Road,  
Samsennai, Phayathai Bangkok 10400, Thailand

+66 2 079 5475

info@eef.or.th

+66 2 619 1812

https://en.eef.or.th



f Equitable Education Fund Thailand

@EEF\_Thailand

eef\_thailand

EEF thailand



## LEARNING RECOVERY

The COVID-19 pandemic situation has affected several sectors, especially the education sector such as the closing down of schools, online studies, and economic problems that forced many children to leave school and increased educational inequality.



online studies



many children  
to leave school

## PROGRAM RESULTS

### Students

80% of the target group recover from education loss in reading, writing, mathematics, emotional and social skills.

### Parents

Parents or community volunteers take part in designing a teaching approach that reduces education loss and restores the learning process.

### Target Teachers

Teachers can design and conduct learning activities that reduce education loss and restore the learning process.

### Schools

Schools have tools and methods to evaluate education loss, survey the readiness of teachers and students, and design a learning process in times of crisis to improve the skills of students.

### Provinces

Provinces have a teaching model that reduces education loss and restores the learning process in times of crisis.

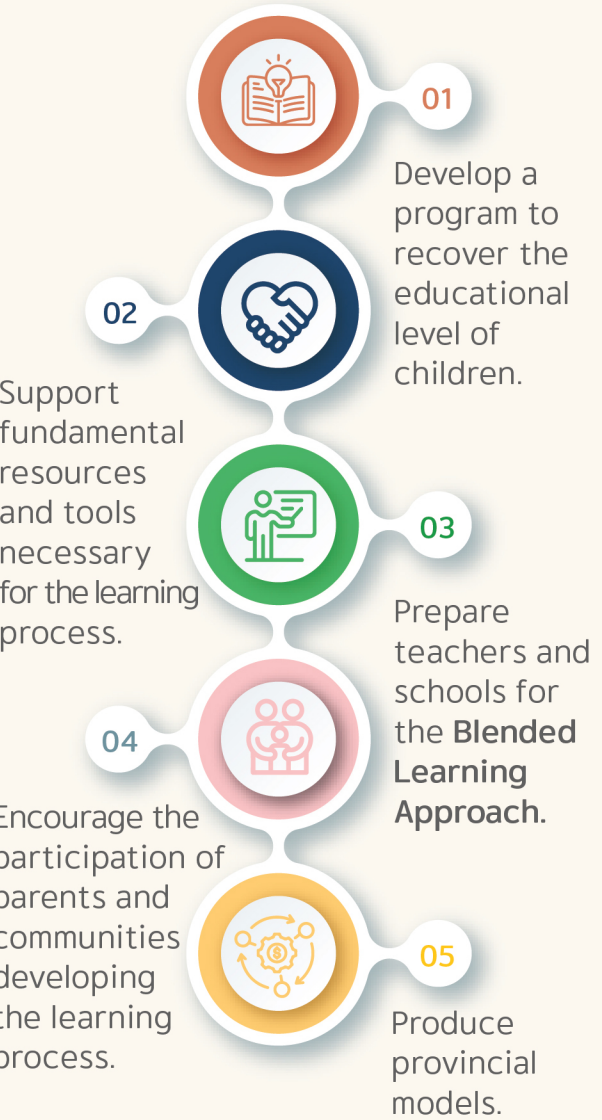


## LEARNING RECOVERY



# PROGRAM RESULTS

Schools have tools and methods to evaluate education loss, survey the readiness of teachers and students, and design a learning process in times of crisis to improve the skills of students.



## PROGRAM OPERATIONS

Recovering the education does not only cover the loss of class hours or technical issues. Many other aspects also require attention.

There are 4 elements to consider in setting recovery measures as below

### Process Data for Teachers 03



Support tools, knowledge and healthcare for teachers for them to see the learning gap, improve the curriculum and prepare to drive the change.

### Landscape Assessment 01



Consider the loss of educational opportunities, learning gap, household conditions, basic needs and internet access.

### Whole School Planning 02



Support the schools, communities, stakeholders, time, security, resources and budget.

### Intervention and Support for Students 04



Support individual/group learning, off-class learning teaching equipment, sanitary, and household conditions.

### Monitoring and Invention Redesign 05



Development, feedback and evaluation.