

Community-Based Innovation & Career Development Scholarships

EEF – Equitable Education Fund (Thailand)

According to 2019 statistical data, out of Thailand's 20.54 million 0-25 years old population, 4.32 million children and teenagers have no access to quality education.

Out of the majority of 2.22 million 6-14 years old (G.1-G.9) children, despite receiving the government's free education, 430,000 children or 19.4% are still not in the school system while the rest 1.79 million children in the poor group and 1 million children in the poorest group are facing the risk of leaving the school system.

Thus, this program **provides learning and skills development opportunities for children and unregistered labor and provides careers for the communities in 2022.**

OBJECTIVE OF THE PROGRAM

ENHANCE SKILLS

To enhance the skills of the working population who are in financial need situation to enable them to find a career according to their abilities and desires.

STUDY AND DEVELOP

To study and develop career opportunities for the working population who are poor and looking for an opportunity to adapt to changes in the society and economy.

DISCOVER COMMUNITY INNOVATIONS

To discover community innovations that will enhance the capabilities of the target groups and communities to enable them to help themselves and ensure sustainability.





TARGET GROUP

The working population who are financial need or looking for opportunities after recovering from pandemic situation.

- 15 years old or older
- Having an education lower than the mandatory educational level
- Having an income of lower than 6,500 THB per month

PRINCIPLES & SCOPE OF THE PROGRAM

The Equitable Education Fund (EEF) Thailand accepts program proposals from private and government schools, communities, foundations, public service organizations, and social activities that are experienced in relevant fields with the **purpose to create community-based innovations and career skills**. The selection process shall be made according to the 4 principles below.



Community-based

The program shall create career opportunities for the target groups by providing skill-building activities and career development with planning and proper manpower under the community's budget.



Self-developed career skills

Emphasize reskilling, upskilling and developing career profiles with 4 main skills such as healthcare skills, economic skills, career technical, and management skills for the 21st century.



Strengthening competency for sustainability

By promoting the host role.



Evaluation & lessons learned

To evaluate the success rate of the target groups, capture lessons learned and share the experience with relevant units.

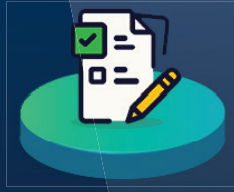
SUPPORT from EEF



Community innovation development

Access to consultants & experts

Community target group analysis



Field research to capture lesson learned & evaluate the success rate of the targets